

A

A'

Elev (m) Ground Surface

390

340

290

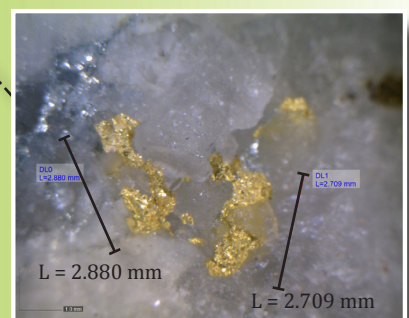
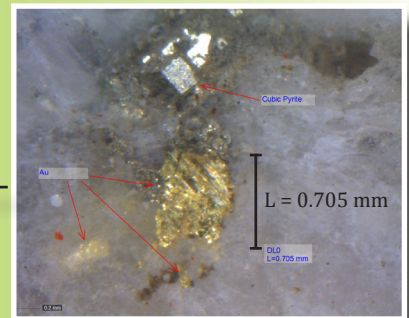
240

190

140

Hole ID	From (m)	To (m)	Length (m)	Au g/t*
MI-19-017	6.0	7.0	1.0	1.48
and inc	32.0	201.0	169.0	<b>0.88</b>
and inc	56.0	93.0	37.0	<b>3.42</b>
and inc	79.0	93.0	14.0	<b>7.27</b>
and inc	83.0	84.0	1.0	65.97
and inc	85.0	86.0	1.0	11.00

\*Au values in bold text contain results of metallic screen fire assay reruns

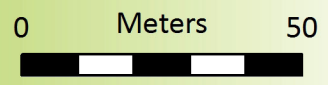


MI-18-006

MI-18-004

OPEN

MI-19-017



- Lithology**
- Overburden
  - Volcanics
  - Gabbro
  - Granodiorite

- Downhole Assay**
- Au g/t**
- > 5.0
  - 1.0 - 5.0
  - 0.5 - 1.0
  - 0.1 - 0.5
  - < 0.1

Interval Reported

\*Final assay results for holes MI-18-004 & MI-18-006 were reported in a previous news release dated March 27, 2019



**Goldlund Property**  
**Miller Prospect**  
**Cross Section A - A'**  
**Hole MI-19-017**  
 Viewing North East (+/- 12.5m)